

Guidelines for Implementation: (How are we going to do it?)

Staff are responsible for knowing, understanding and implementing the Behavior Management procedures of St Monica's Primary School, Kangaroo Flat. Staff will make themselves familiar with the St Monica's Behavior Flowchart and the contents of the PBIS folder in their room. A copy can also be found in the administration area and in the photocopier room.

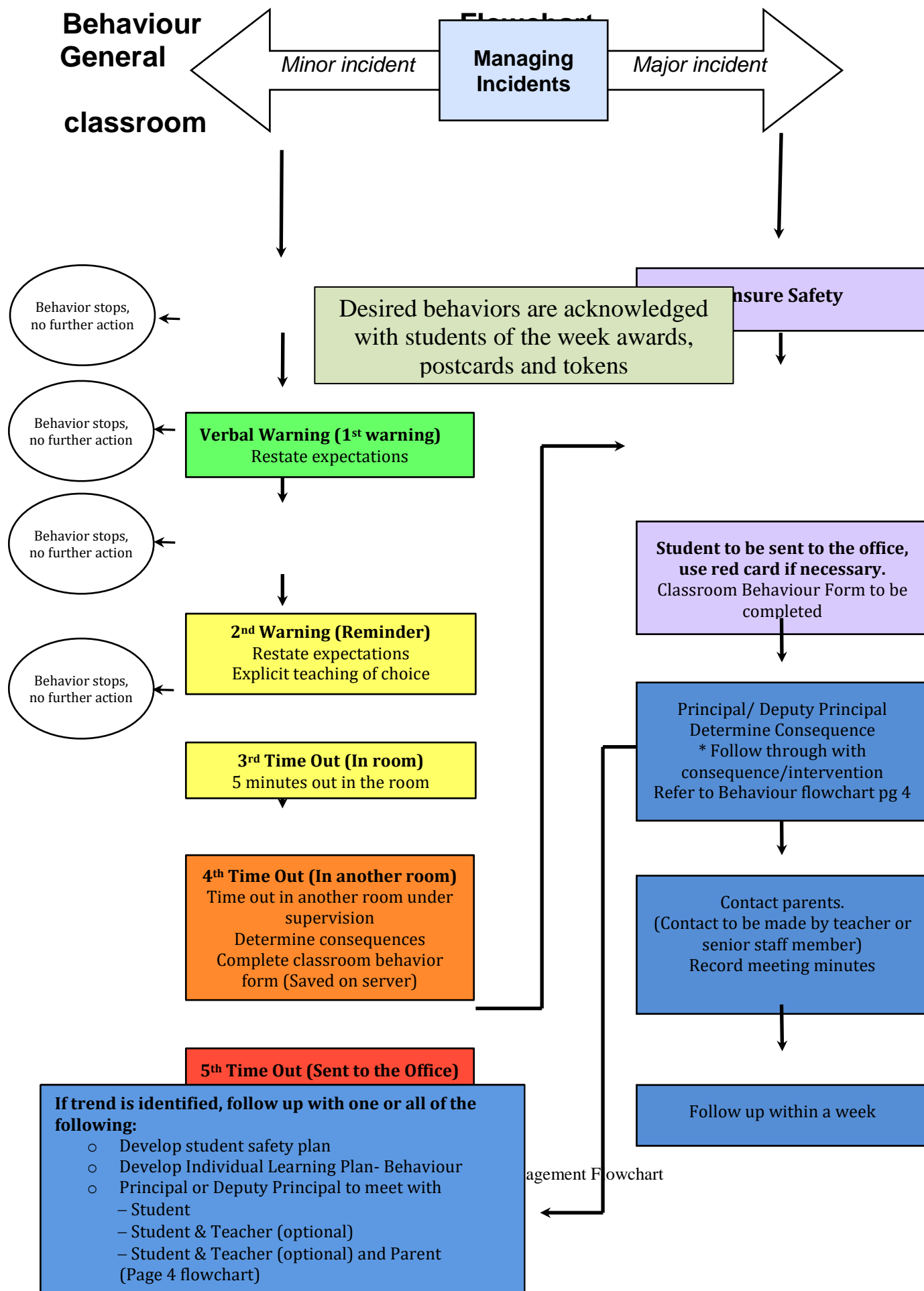
There are agreed behavior expectations that are implemented to support the school wide capacity for behavioral teaching and intervention. They recognise, and support, classroom management and promote family support and collaboration.

With Positive Behaviour Intervention and Support (PBIS), we will ensure that:

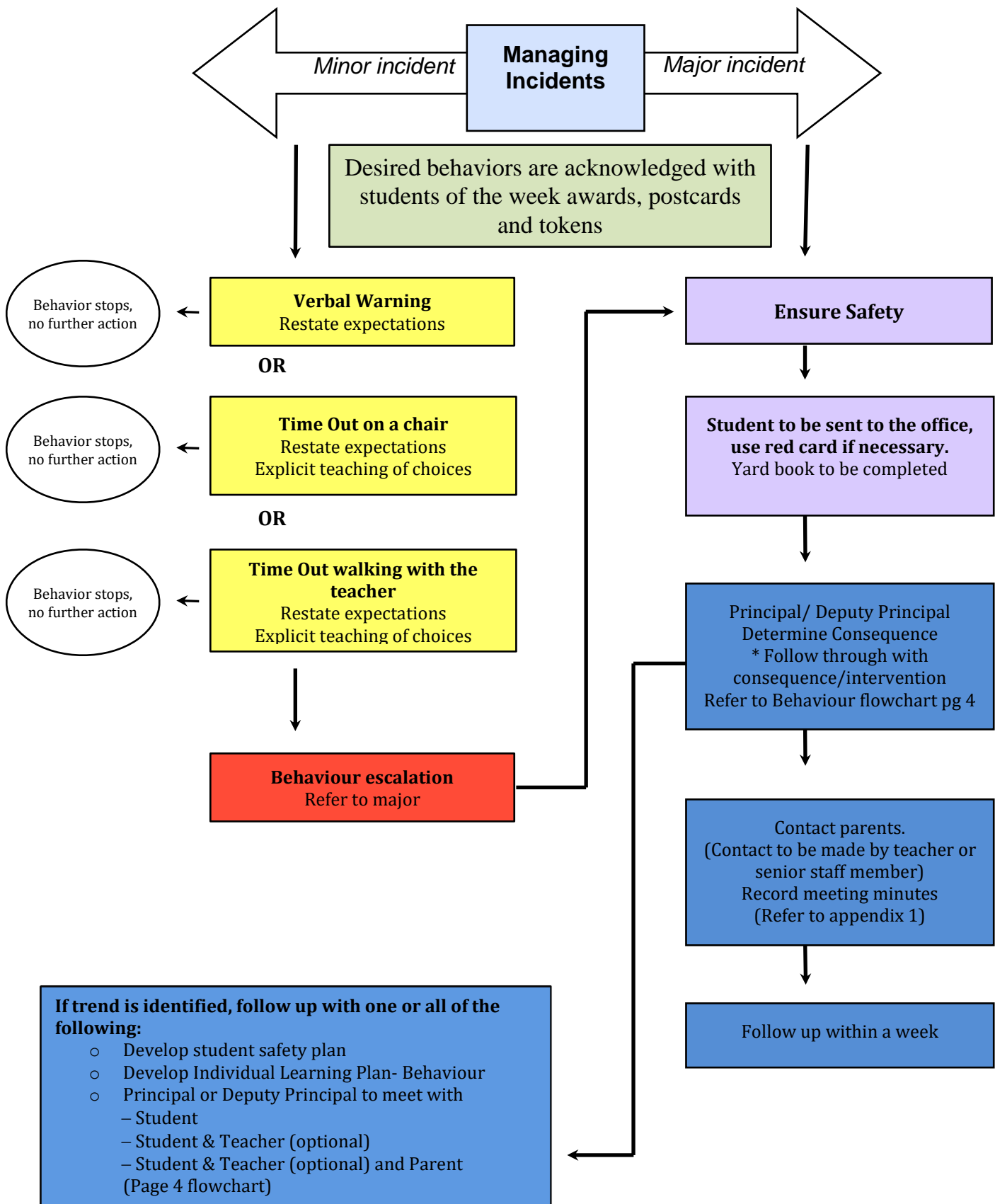
1. Agreed behaviors are developed for teaching, relating to all school settings.
2. Agreed behaviors are posted and visible in all school settings.
3. Staff receive professional development to teach and implement the agreed behaviors.
4. Staff teach, and revisit, behavioral expectations for each setting on a regular basis throughout the year.
5. A school wide system is defined for recognizing and acknowledging agreed and expected behavior.
6. Staff support, and consistently use, the school wide recognition system in all settings, recognizing that individual classrooms may have their own positive acknowledgement systems in class, too.
7. In general, staff have four positive interactions with students for every correctional or adverse interaction.
8. Problem behaviors are clearly defined and explained to students and families where appropriate.
9. Consequences for problem behaviors are clearly defined and explained to all students and families where appropriate, using the St Monica's Behavior flowchart. Some students may use their own Behavioural ILP.
10. Staff use consistent consequences for inappropriate behavior as defined in the flowchart.
11. Families are active participants in supporting school wide behavior expectations.
12. The school supports appropriate parenting practices by providing information and support to families.
13. The school has defined systems for regular, positive contacts with families.

14. Corporal punishment is not an acceptable behavior management tool and is a criminal offence that can affect VIT registration.

St Monica's



St Monica's Behaviour Flowchart Yard

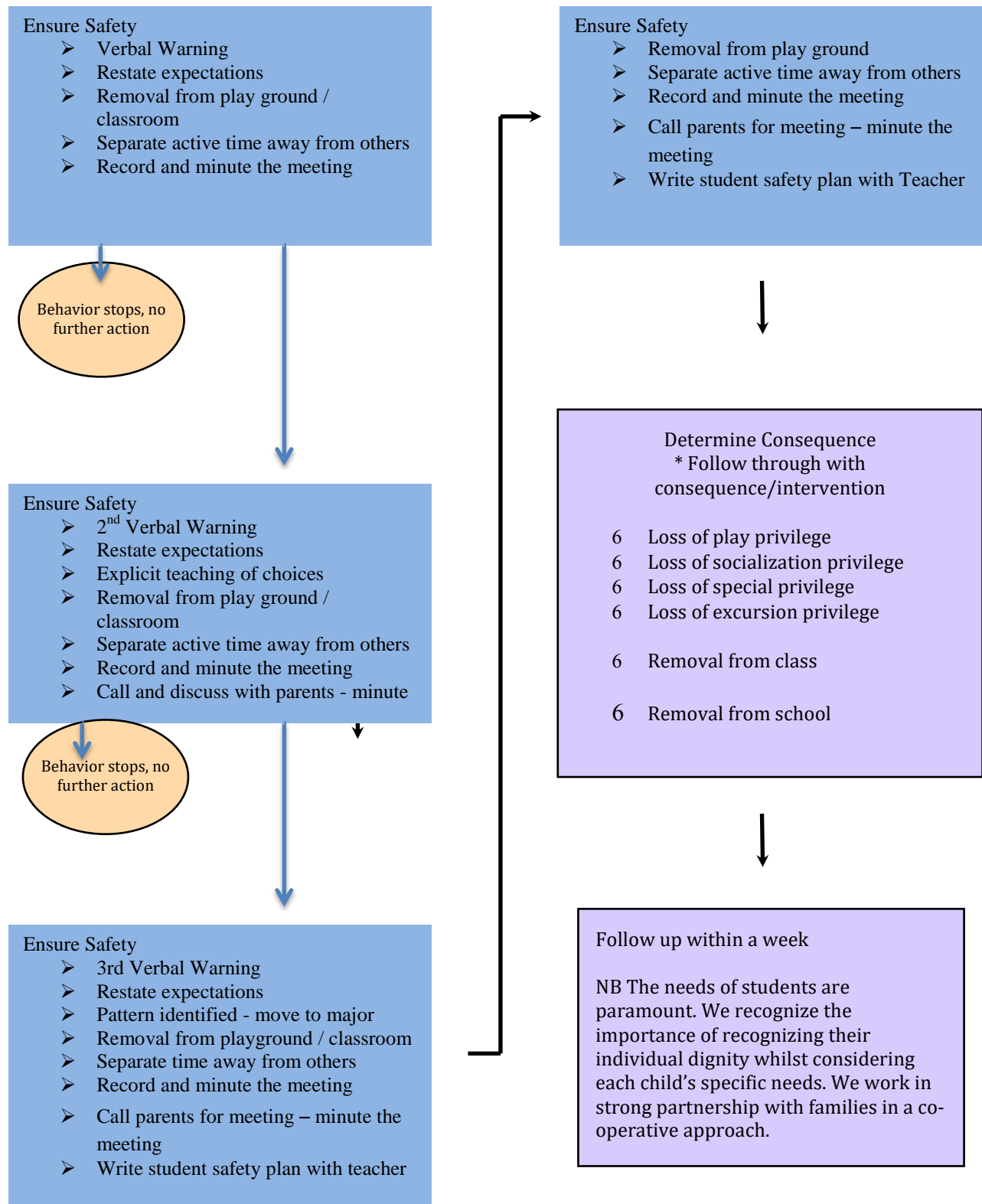


St Monica's

Behaviour Flowchart

Principal & Deputy Principal

Intervention for serious events



Saint Monica's Behavior Management Flowchart